

# EATON MASCOTT ESTATE

This plan is published for the convenience of the purchaser only. Its accuracy is not guaranteed and it is expressly excluded from any contract.

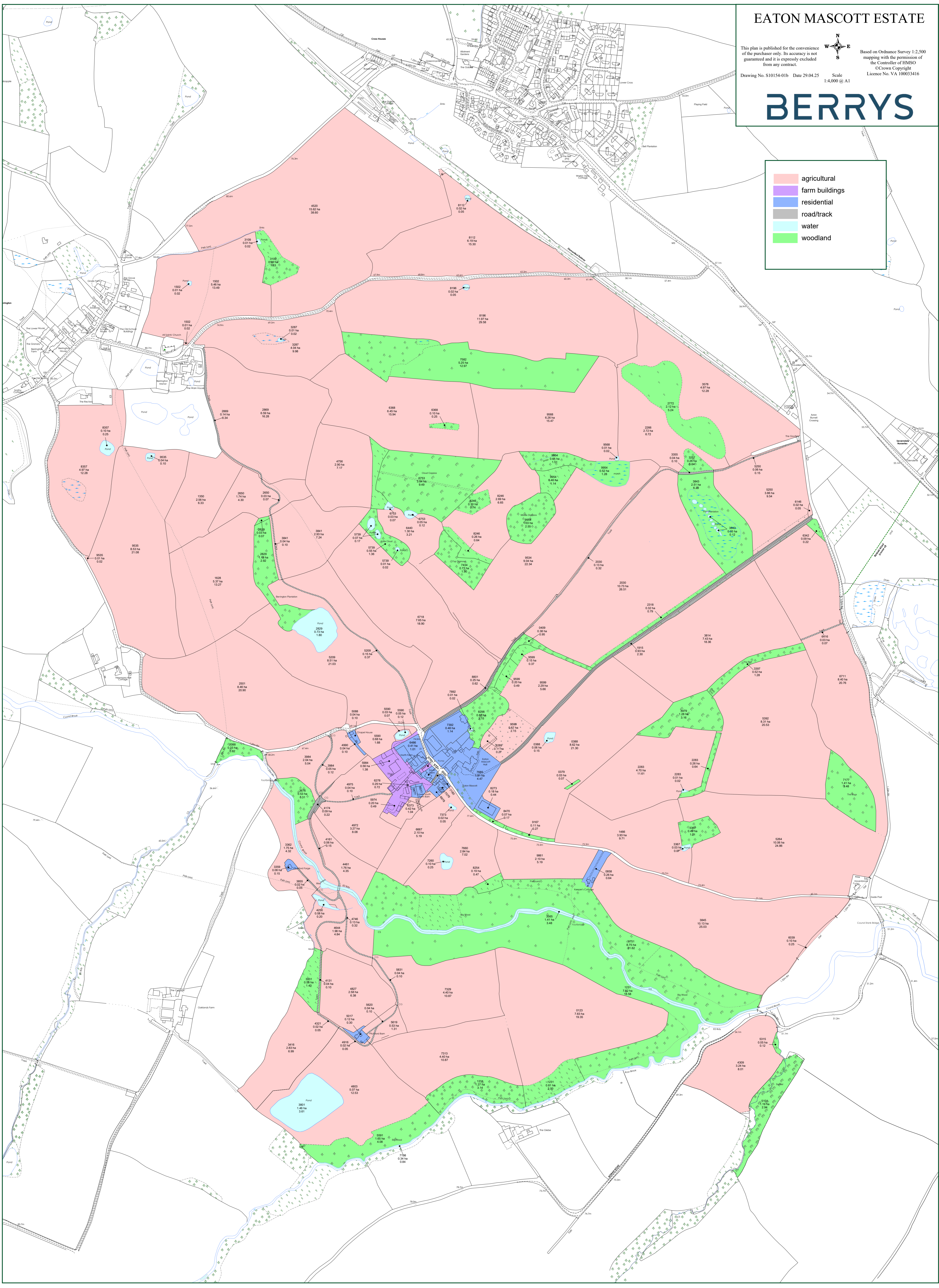


Based on Ordnance Survey 1:2,500 mapping with the permission of the Controller of HMSO  
© Crown Copyright  
Licence No. VA 100033416

Drawing No. S10154-01b Date 29.04.25 Scale 1:4,000 @ A1

# BERRYS

- agricultural
- farm buildings
- residential
- road/track
- water
- woodland



Field Number	Parcels		Hectares	Acres
	Number on BPS	Description		
SJ5307	1502	Arable Land	5.46	13.49
SJ5307	1502	Arable Land	0.01	0.02
SJ5307	1502	Pond	0.01	0.02
SJ5307	3109	Woodland	0.66	1.63
SJ5307	3109	Pond	0.01	0.02
SJ5307	4520	Arable Land	15.62	38.60
SJ5307	8112	Arable Land	6.19	15.30
SJ5307	8112	Pond	0.02	0.05
SJ5306	3287	Permanent Pasture	4.04	9.98
SJ5306	3287	Pond	0.01	0.02
SJ5306	8196	Arable Land	11.97	29.58
SJ5306	8196	Pond	0.02	0.05
SJ5306	7582	Woodland	5.25	12.97
SJ5306	2869	Road/Track	0.14	0.35
SJ5306	2869	Arable Land	6.59	16.28
SJ5306	6368	Permanent Pasture	6.45	15.94
SJ5306	6368	Woodland	0.10	0.25
SJ5306	9568	Permanent Pasture	6.26	15.47
SJ5306	9568	Pond	0.01	0.02
SJ5406	2266	Permanent Pasture	2.72	6.72
SJ5406	2772	Woodland	2.12	5.24
SJ5406	3257	Woodland	0.26	0.64
SJ5406	3578	Permanent Pasture	4.97	12.28
SJ5206	8357	Arable Land	4.97	12.28
SJ5206	8357	Pond	0.10	0.25
SJ5206	9535	Arable Land	0.01	0.02
SJ5206	9535	Arable Land	8.53	21.08
SJ5206	9535	Pond	0.04	0.10
SJ5306	1350	Arable Land	2.56	6.33
SJ5306	1628	Arable Land	5.37	13.27
SJ5306	2829	Woodland	0.03	0.07
SJ5306	2829	Woodland	1.18	2.92
SJ5306	2829	Pond	0.73	1.80
SJ5306	2650	Permanent Pasture	1.74	4.30
SJ5306	2650	Road/Track	0.03	0.07
SJ5306	4756	Permanent Pasture	2.90	7.17
SJ5306	3841	Road/Track	0.04	0.10

SJ5306	3841	Arable Land	2.93	7.24
SJ5306	6753	Pond	0.03	0.07
SJ5306	6753	Pond	0.05	0.12
SJ5306	6753	Woodland	3.84	9.49
SJ5306	5739	Pond	0.07	0.17
SJ5306	5739	Woodland	0.55	1.36
SJ5306	5739	Pond	0.01	0.02
SJ5306	6440	Permanent Pasture	1.30	3.21
SJ5306	7434	Woodland	0.77	1.90
SJ5306	8246	Woodland	0.30	0.74
SJ5306	8246	Permanent Pasture	2.69	6.65
SJ5306	8246	Woodland	0.26	0.64
SJ5306	9954	Woodland	0.61	1.51
SJ5306	9954	Woodland	0.46	1.14
SJ5306	9954	Woodland	1.03	2.55
SJ5306	9954	Woodland	0.52	1.28
SJ5306	9534	Arable Land	9.04	22.34
SJ5406	2030	Road/Track	0.13	0.32
SJ5406	2030	Arable Land	10.73	26.51
SJ5406	2318	Woodland	0.32	0.79
SJ5406	3355	Road/Track	0.04	0.10
SJ5406	3843	Woodland	2.51	6.20
SJ5406	3843	Pond	0.05	0.12
SJ5406	5250	Road/Track	0.06	0.15
SJ5406	5250	Arable Land	3.86	9.54
SJ5407	6146	Visibility Splay	0.02	0.05
SJ5306	2501	Arable Land	8.46	20.90
SJ5306	5209	Permanent Pasture	8.51	21.03
SJ5306	5209	Road/Track	0.15	0.37
SJ5306	6718	Arable Land	7.65	18.90
SJ5306	8801	Road/Track	0.25	0.62
SJ5406	0409	Woodland	0.38	0.94
SJ5406	9599	Woodland	0.15	0.37
SJ5305	9599	Woodland	0.20	0.49
SJ5305	9599	Permanent Pasture	2.29	5.66
SJ5305	1915	Road/Track	0.93	2.30
SJ5406	3814	Arable Land	7.43	18.36
SJ5406	6711	Arable Land	8.40	20.76
SJ5406	6342	Woodland	0.09	0.22
SJ5406	6416	Road/Track	0.03	0.07

SJ5305	2088	Woodland	0.33	0.82
SJ5305	3984	Permanent Pasture	2.04	5.04
SJ5305	3984	Road/Track	0.05	0.12
SJ5305	3676	Woodland	0.53	1.31
SJ5305	4174	Road/Track	0.09	0.22
SJ5305	4975	Road/Track	0.04	0.10
SJ5305	4972	Permanent Pasture	3.27	8.08
SJ5305	4990	Chapel House	0.04	0.10
SJ5305	5088	Chapel House	0.04	0.10
SJ5305	5590	Permanent Pasture	0.68	1.68
SJ5305	5590	Permanent Pasture	0.03	0.07
SJ5305	5590	Pond	0.05	0.12
SJ5305	5984	Farm Buildings	0.56	1.38
SJ5305	6278	Farm Buildings	0.29	0.72
SJ5305	5974	Farm Buildings	0.20	0.49
SJ5305	6486	North Farm House	0.41	1.01
SJ5305	6783	Farm Buildings	0.03	0.07
SJ5305	6781	South Farm House	0.10	0.25
SJ5305	6980	Road/Track	0.02	0.05
SJ5305	6477	Upper South Farm Barn	0.04	0.10
SJ5305	6577	Lower South Farm Barn	0.06	0.15
SJ5305	6373	Permanent Pasture	0.42	1.04
SJ5305	6978	Top Cottage	0.07	0.17
SJ5305	7079	Middle Cottage	0.05	0.12
SJ5305	7180	Gardeners Cottage	0.05	0.12
SJ5305	7392	Eaton Mascott Hall	0.46	1.14
SJ5305	7685	Eaton Mascott Hall	1.81	4.47
SJ5305	8273	Menage	0.18	0.44
SJ5305	8298	Woodland	0.87	2.15
SJ5305	8289	Permanent Pasture	0.11	0.27
SJ5305	9599	Permanent Pasture	0.87	2.15
SJ5305	8470	Woodland	0.07	0.17
SJ5305	9167	Woodland	0.11	0.27
SJ5405	0388	Permanent Pasture	8.62	21.30
SJ5405	0388	Pond	0.06	0.15
SJ5405	0376	Woodland	0.03	0.07
SJ5405	2283	Arable Land	4.70	11.61
SJ5405	2283	Pond	0.01	0.02
SJ5405	2283	Woodland	0.26	0.64
SJ5405	3973	Woodland	1.28	3.16

SJ5405	3397	Woodland	0.52	1.28
SJ5405	5392	Arable Land	8.31	20.53
SJ5405	7177	Woodland	1.41	3.48
SJ5305	3362	Permanent Pasture	1.75	4.32
SJ5305	3359	Pitchford Forge	0.06	0.15
SJ5305	3855	Road/Track	0.02	0.05
SJ5305	4161	Road/Track	0.06	0.15
SJ5305	4461	Permanent Pasture	1.76	4.35
SJ5305	6667	Permanent Pasture	2.10	5.19
SJ5305	7373	Pond	0.02	0.05
SJ5305	7660	Permanent Pasture	2.84	7.02
SJ5305	7260	Pond	0.10	0.25
SJ5305	8254	Woodland	0.19	0.47
SJ5305	9861	Temporary Grass	2.10	5.19
SJ5305	0858	Keepers Cottage	0.26	0.64
SJ5405	1466	Permanent Pasture	3.93	9.71
SJ5405	3367	Pond	0.03	0.07
SJ5405	3367	Woodland	0.49	1.21
SJ5405	5264	Arable Land	10.06	24.86
SJ5305	4250	Pond	0.08	0.20
SJ5305	4746	Road/Track	0.13	0.32
SJ5305	4644	Permanent Pasture	1.96	4.84
SJ5305	3565	River	1.41	3.48
SJ5305	9751	Woodland	8.75	21.62
SJ5405	3845	Arable Land	10.13	25.03
SJ5405	6039	Permanent Pasture	0.10	0.25
SJ5305	3931	Woodland	0.58	1.43
SJ5305	4131	Road/Track	0.04	0.10
SJ5305	4827	Arable Land	2.58	6.38
SJ5305	5017	Pitchford Barn	0.12	0.30
SJ5305	5620	Road/Track	0.04	0.10
SJ5305	5619	Permanent Pasture	0.53	1.31
SJ5305	5831	Road/Track	0.04	0.10
SJ5305	7329	Arable Land	4.40	10.87
SJ5405	1231	Woodland	7.52	18.58
SJ5405	3416	Arable Land	2.83	6.99
SJ5405	4321	Road/Track	0.02	0.05
SJ5405	3801	Pond	1.46	3.61
SJ5405	4916	Road/Track	0.02	0.05
SJ5405	4803	Permanent Pasture	5.07	12.53

SJ5405	5591	Woodland	1.65	4.08
SJ5405	7198	River	0.34	0.84
SJ5405	7313	Arable Land	4.40	10.87
SJ5405	1231	Woodland	1.27	3.14
SJ5405	0123	Arable Land	7.83	19.35
SJ5405	1231	Woodland	0.81	2.00
SJ5405	4309	Permanent Pasture	3.24	8.01
SJ5405	5315	Woodland	0.05	0.12
SJ5405	5101	Woodland	1.19	2.94
			<b>327.75</b>	<b>809.87</b>

<u>Totals</u>	HA	ACRES
Arable Land	181.02	447.30
Grassland	85.29	210.75
Woodland	49.50	122.31
Other	7.29	18.01
Property	4.65	11.49
	327.75	809.87